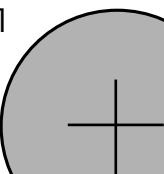
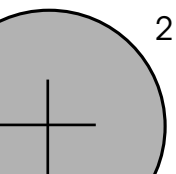


Toddler Top
Back Skirt
Cut 2
(approximately 18- 24 months size- 1/2"
seam allowance and 1" hem included)

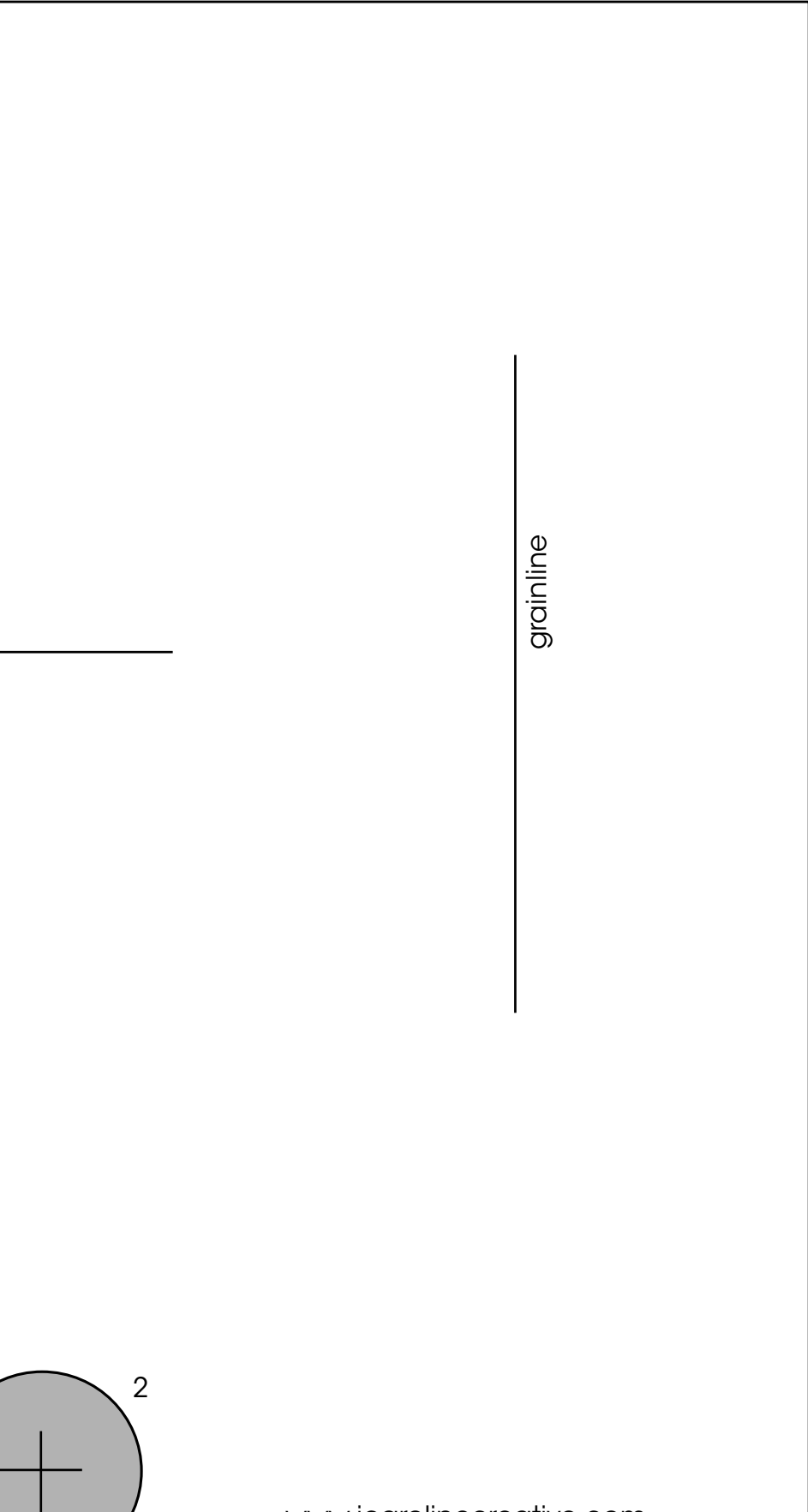
6" guage line





2

grainline



Toddler Top
Front Skirt
Cut 1 on fold
(approximately 18- 24 months size- 1/2"
seam allowance and 1" hem included)

cut on fold

6" guage line

4

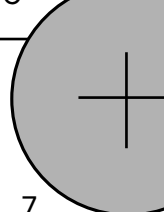
grainline

Toddler Top
Straps
Cut 2
(approximately 18- 24 months size- 1/2"
seam allowance included)

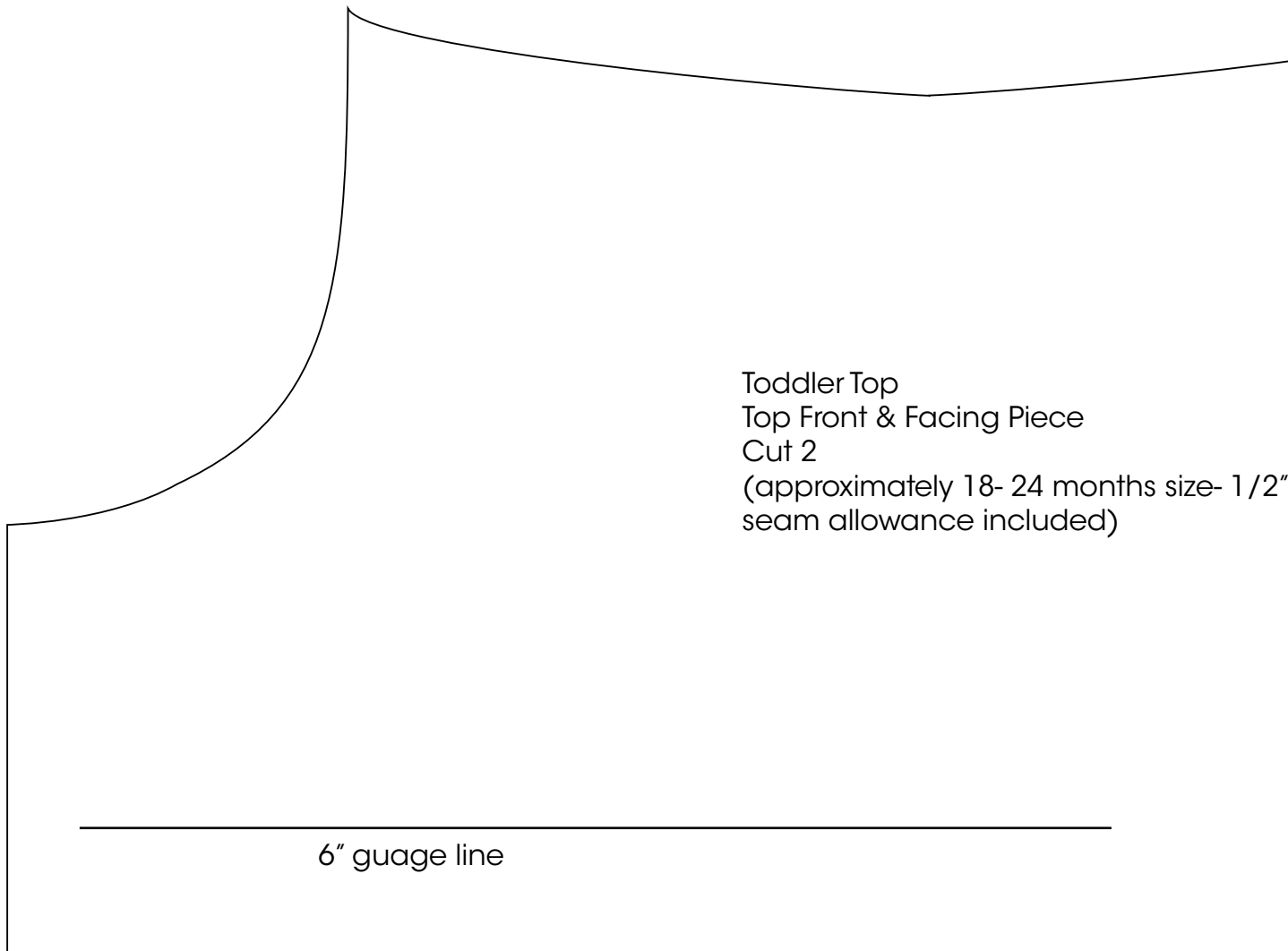
grainline

Piece
24 months size- 1/2"
(included)

center back

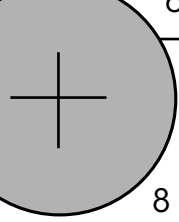


7

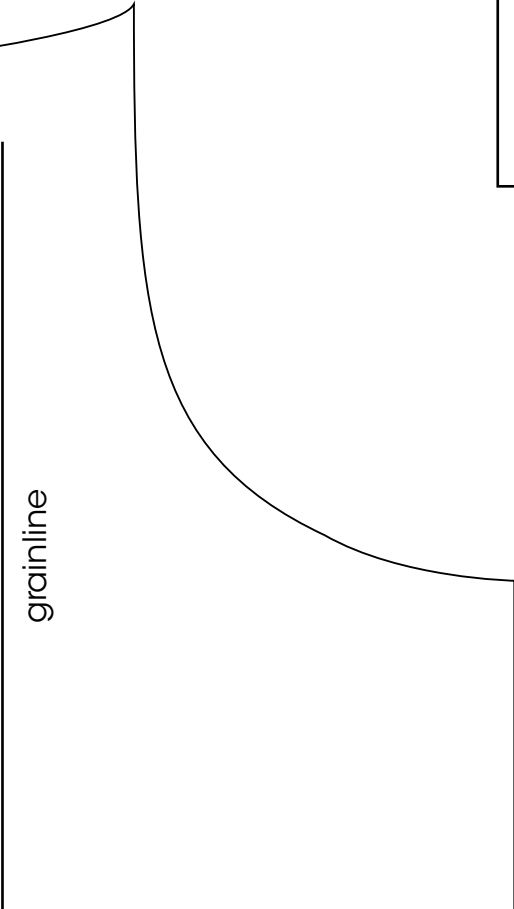


Toddler Top
Top Front & Facing Piece
Cut 2
(approximately 18- 24 months size- 1/2"
seam allowance included)

6" guage line



1/2"



grainline

www.jcarolinecreative.com

Toddler Top
 Top Back & Facing Piece
 Cut 4
 (approximately 18- 24 months)
 seam allowance included

grainline